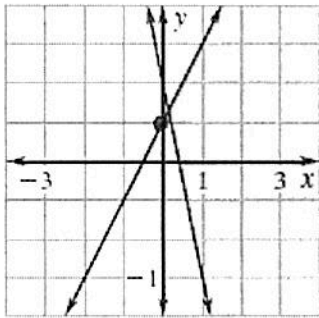


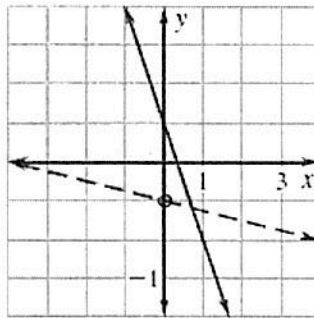
IT'S YOUR TURN NOW

State whether the ordered pair is a solution to the system of inequalities.

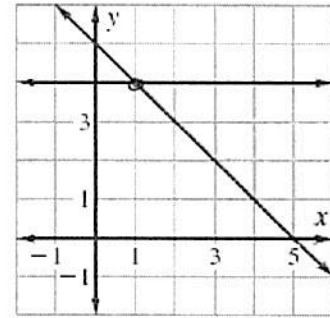
1) (0, 1) No



2) (0, -1) No



3) (1, 4) Yes



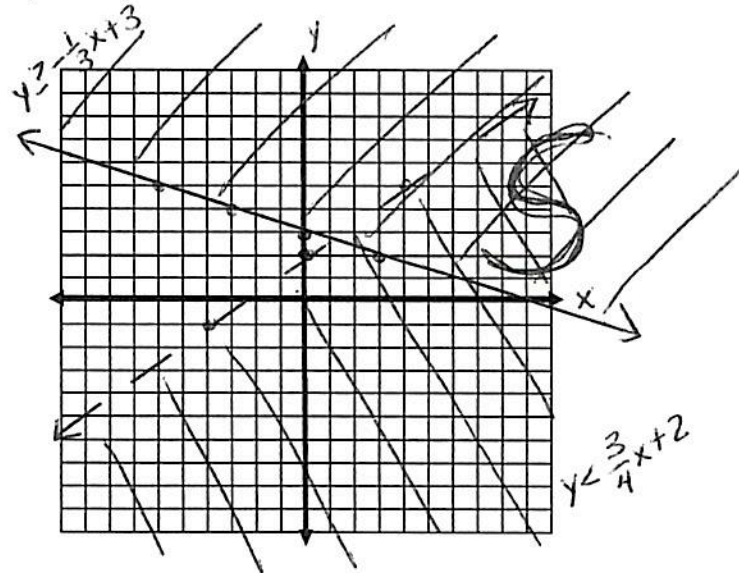
Solve the following systems of inequalities graphically. Mark the solution area with a capital S.

4) $y < \frac{3}{4}x + 2$
 $\leftarrow \text{---} \rightarrow$
 $m = \frac{3}{4}$

$b = 2$

$y \geq -\frac{1}{3}x + 3$
 $\leftarrow \text{---} \rightarrow$
 $m = -\frac{1}{3}$

$b = 3$



5) $-2y \geq -3x - 6$ $x < -3$

$y \leq \frac{3}{2}x + 3$

$m = \frac{3}{2}$

$b = 3$

