

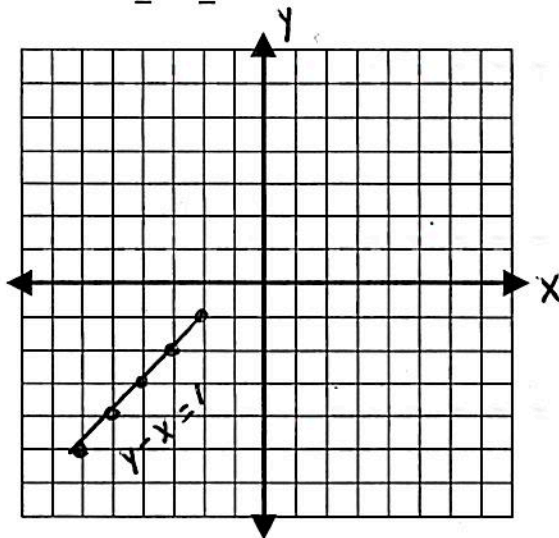
1. Graph the following linear function using the domain $-6 \leq x \leq -2$ where x is a real number.

$$y - x = 1$$

$$+x \quad +x$$

$$y = x + 1$$

x	y
-6	-5 ←
-5	-4
-4	-3
-3	-2
-2	-1 ←



y value

Represent the range of the function using an inequality statement and interval notation.

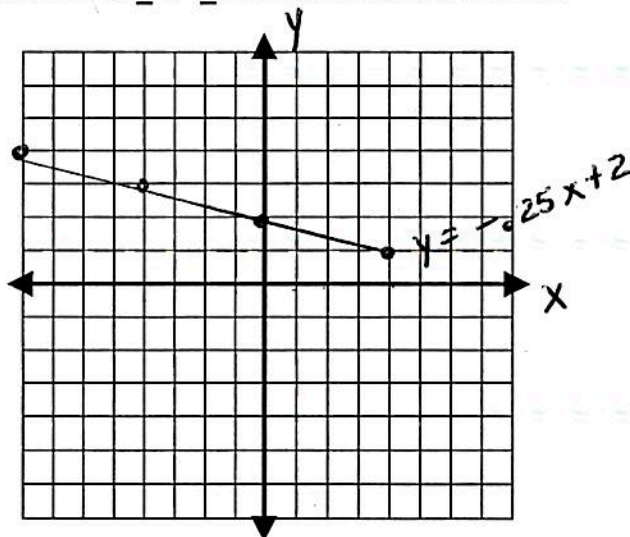
Inequality Statement: $-5 \leq y \leq -1$

Interval Notation: $[-5, -1]$

2. Graph the following linear function using the domain $-8 \leq x \leq 4$ where x is a real number.

$$y = -0.25x + 2$$

x	y
-8	4 ←
-4	3
0	2
4	1 ←



y

Represent the range of the function using an inequality statement and interval notation.

Inequality Statement: $1 \leq y \leq 4$

Interval Notation: $[1, 4]$